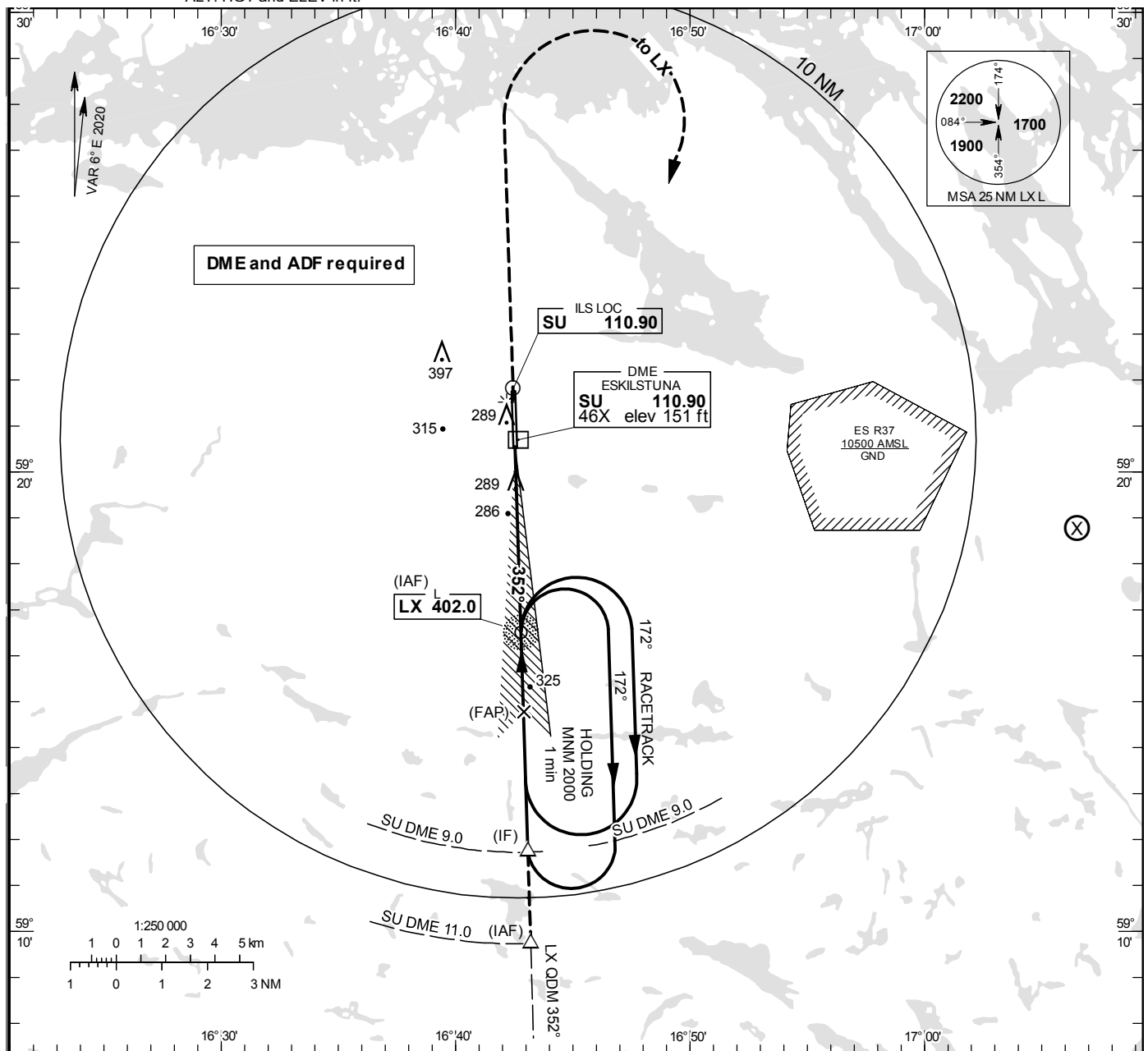


**ESKILSTUNA****ILS or LOC RWY 36****INSTRUMENT  
APPROACH  
CHART – ICAO****THR ELEV 130.4 ft, AD ELEV 140 ft**

OCH are related to THR.  
Circling OCH are related to AD ELEV.  
BRG are MAG  
ALT, HGT and ELEV in ft.

**ESKILSTUNA  
INFORMATION**

126.855

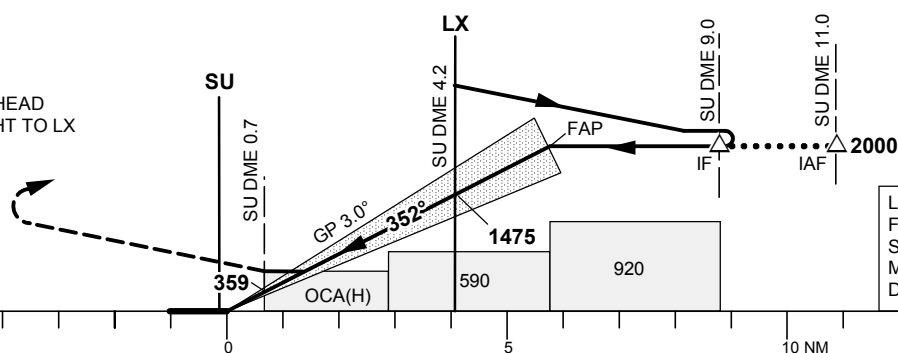
**TA 5000 ft AMSL**

RDH 50.9 ft

\*Timing not authorized for defining the MAPt

OM replaced by SU DME 4.2  
MM replaced by SU DME 0.7

CLIMB STRAIGHT AHEAD  
TO 1200, TURN RIGHT TO LX  
CLIMBING TO 2000.



LOC  
FAF at SU DME 5.9 2000  
SU DME 3.0 1100  
MAPt at SU DME 0.7  
Descent grad 5.2%

OCA (H)		Final approach		LOC Distance FAF-MAPt 5.2 NM*			
Cat of ACFT	A	B	DME SU NM	5	4	3	2
Straight-in Approach	CAT I	282(152)	293(163)	1730	1410	1090	780
LOC	550(410)		GS	kt	70	80	90
Circling	620(480)	700(560)	Time	min:s	4:22	3:50	3:24
			Rate of descent	ft/min	370	425	480
					530	585	635
					690		

CHANGE: Editorial